

OIL SPILL
RECOVERY
AUTOMATIC
AND
MONITORING
SYSTEM

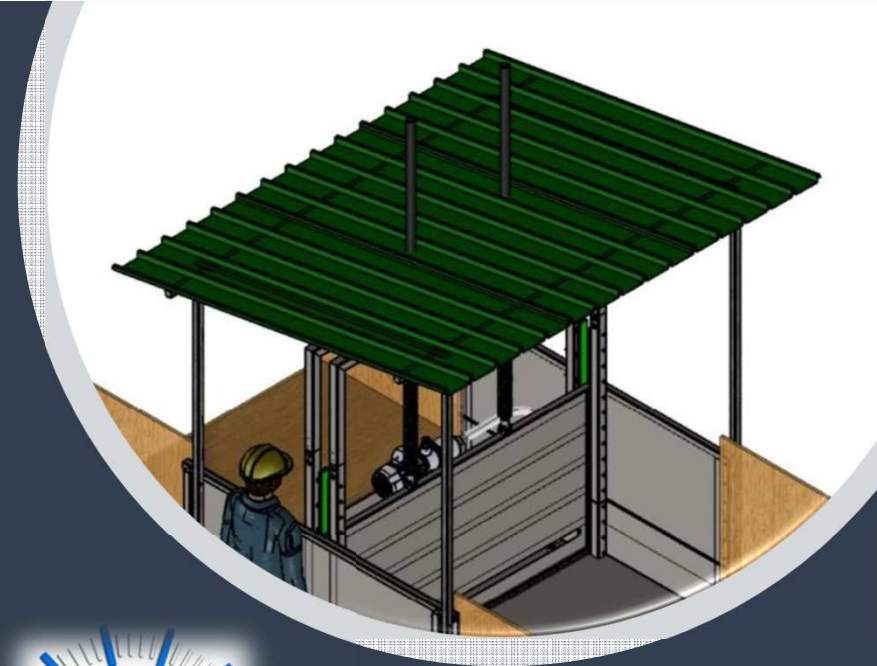


sam **AUTOMATIC
GROUNDWATER
MONITORING
SYSTEM** From Samis® System

System Main Features

The *SAMIS* system is mainly composed by the following four units:

1. a detection unit remotely monitored that transmits (email, SMS, dedicated software) in real time the alarms to the people in charge. The detection system is set depending on the substance or family of substances that are wanted to be detected. This makes the SAMIS system a 24/7 active sentry;
2. a pollutant automatic block unit; the unit is configured according to the type of structure where the system is installed (pipes, channels, tanks);
3. a recovery unit;
4. an alarms activation unit.



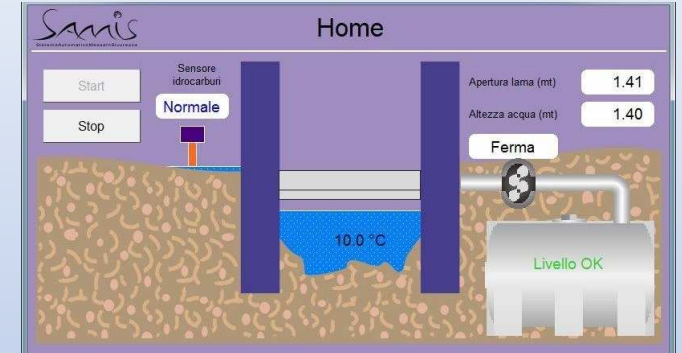
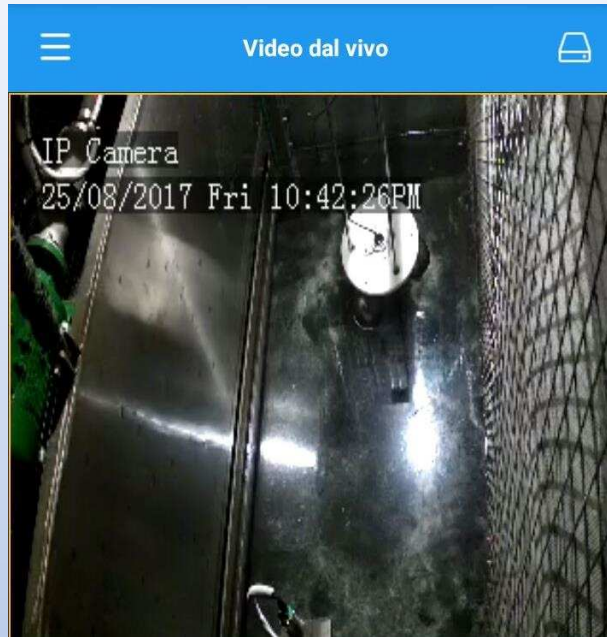
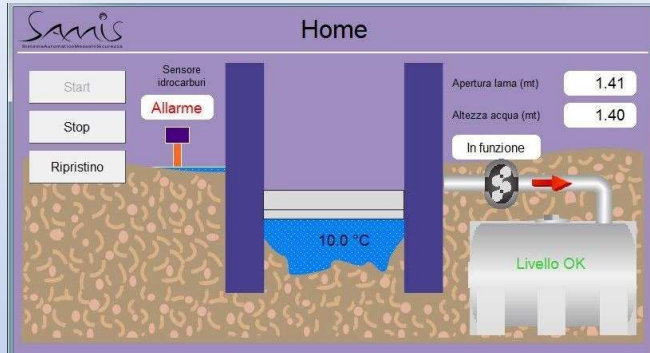
SAMIS[®]
System
Installation



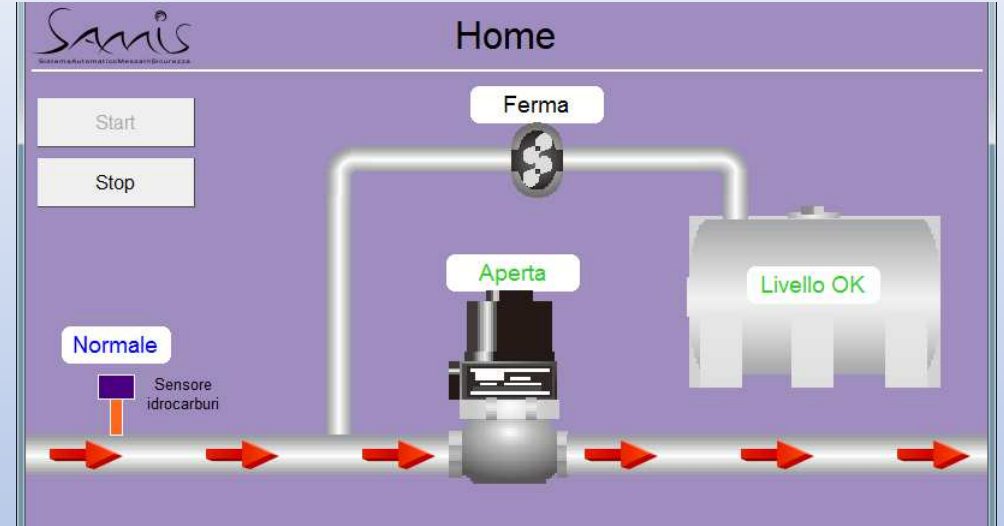
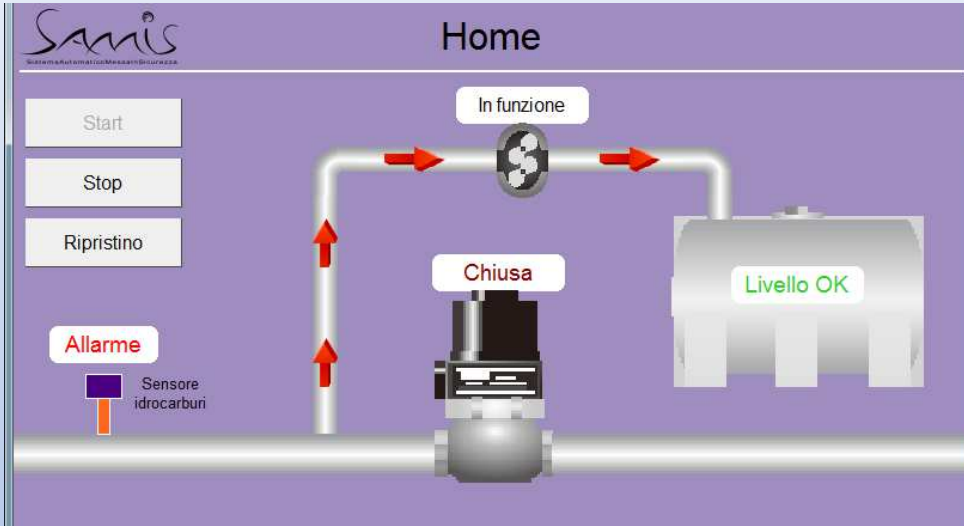


SAMIS System in a National Park

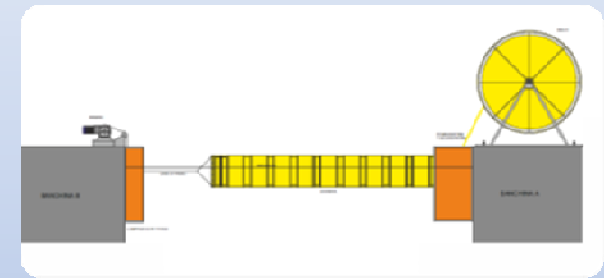
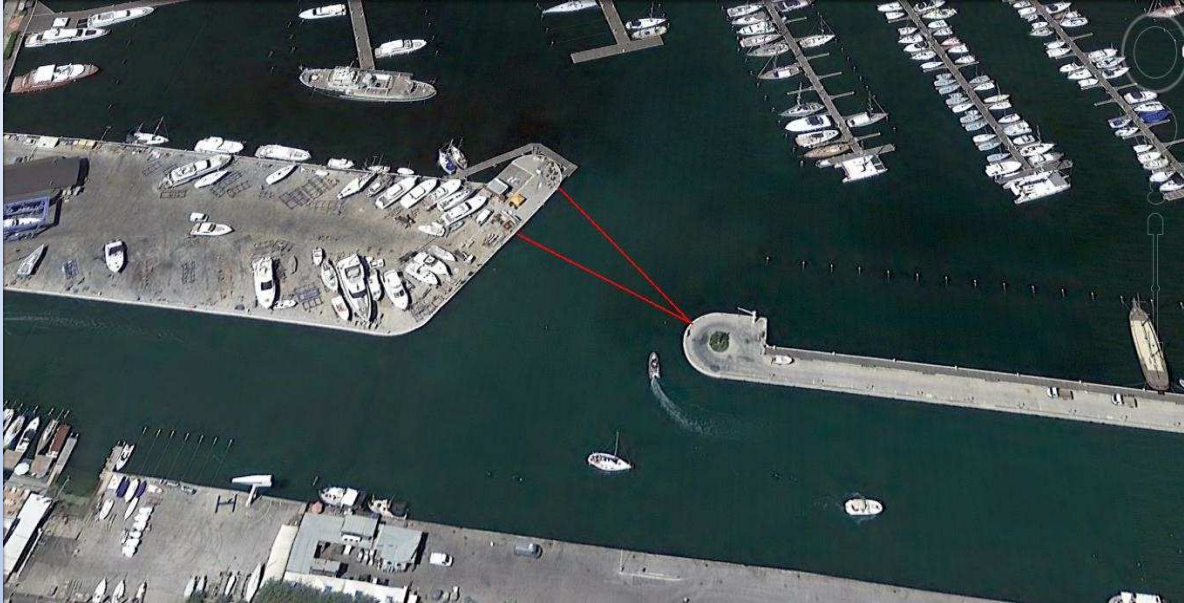
The Samis has been successfully installed in 2017 within an Italian National Park to protect a sensitive water course. So far it has activated 4 times due to the presence of floating oil that has been stopped and recovered by the system.



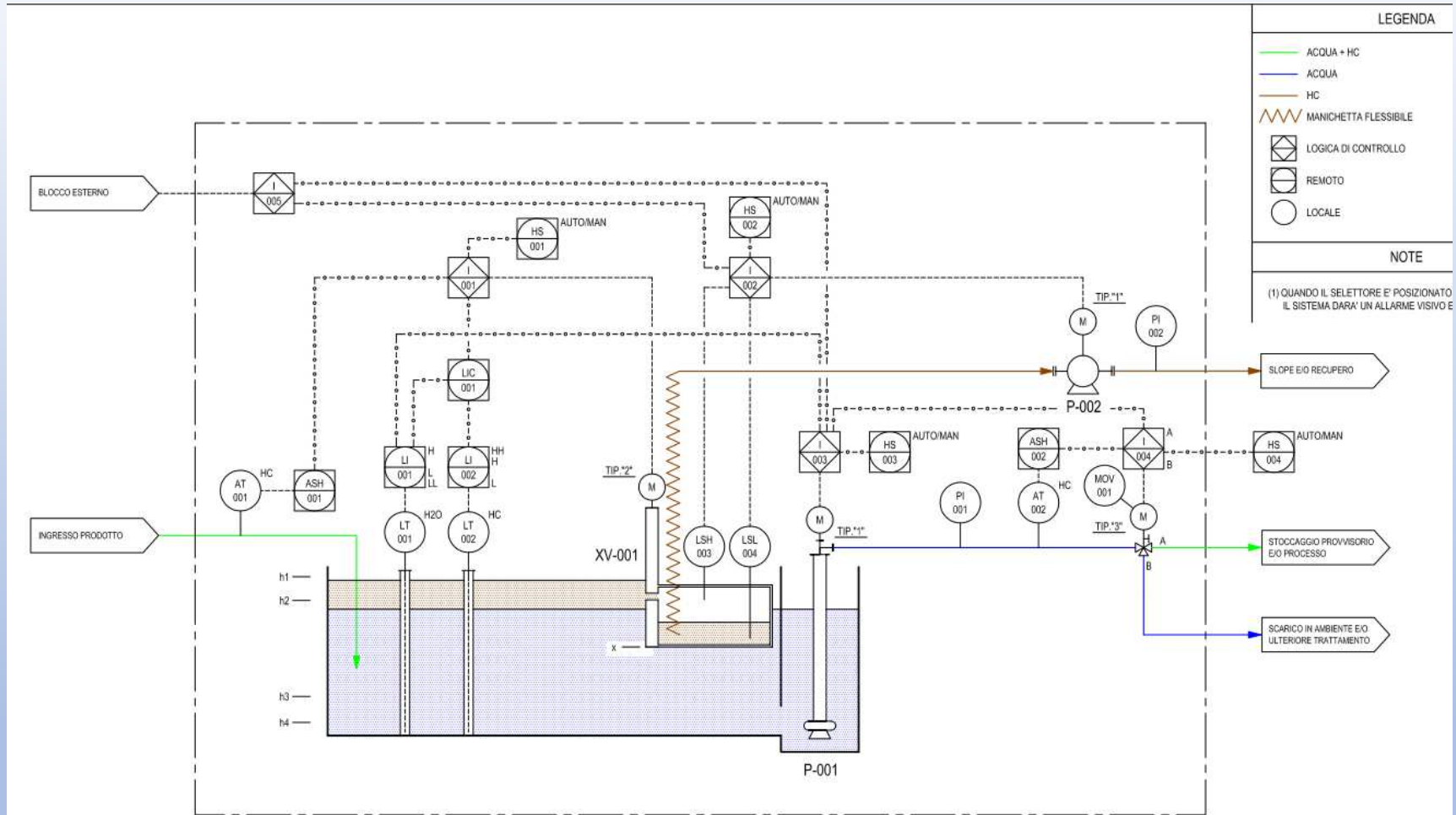
Live Control



SAMIS[®] for Piping



SAMIS[®] for Ports



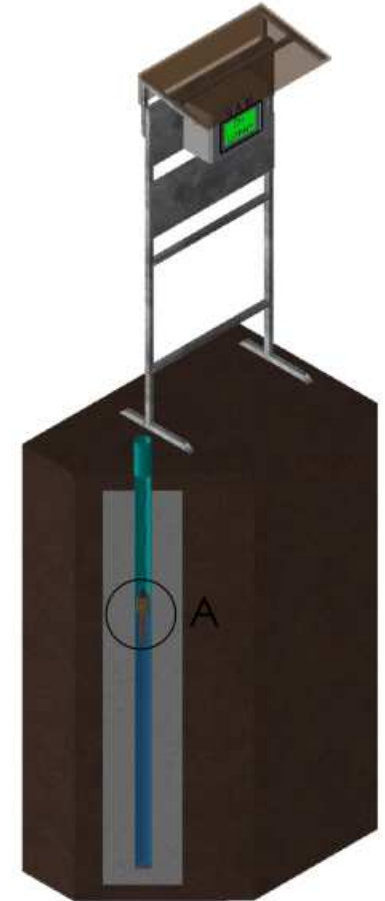
SAMIS[®] for API Separator

sam **AUTOMATIC
GROUNDWATER
MONITORING
SYSTEM** From Samis® System

The SAM system is a SAMIS configuration to automatically detect and, if requested, recover the contaminated fluid in a groundwater monitoring well.

The system can be set to follow the changes of the aquifer over time.

The SAM has been successfully installed in 2016 in an Oil Extraction Field in Italy to monitor the presence of Crude Oil in groundwater wells close to the extraction spots.



Our Headquarter in Italy



Via Macanno 38/N
47923 Rimini (RN)



info@heurekambiente.it
pec@heurekambiente.it



+39 328 3451637



P.Iva: 04169980408

Thanks by the Heureka Ambiente TEAM